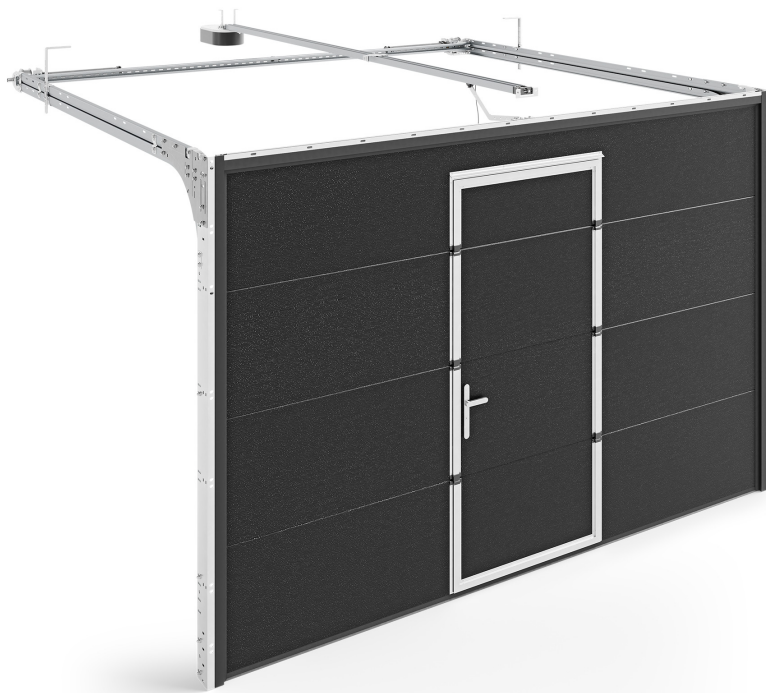


INFINITI R – doors with torsion springs (rear)

Choose a variant: Service door



- ✓ service doors (passage doors) allow pedestrian traffic without the need of opening the gate
- ✓ opening the gate less frequently extends the life of its components
- ✓ doors available with a low or high threshold and as a right or left door
- ✓ door width: from 800 to 900 mm
- ✓ minimum gate height: 1850 mm
- ✓ minimum distance of the door from the edge of the gate: 500 mm

5,5 m

maximum width

3 m

maximum height

12,5 m²

maximum size

Passage (service) doors for sectional garage doors are an optimal solution when the rooms they close also serve as a place to store small items or many pedestrians pass through them. Their use means that the gate does not have to be opened every time, which reduces the wear of its components.

All doors open outwards. You can choose a right door, where the handle is on the left, or a left door, where the handle is on the right. The presence of the handle does not negatively affect the movement of the gate sash. Their optimal width is 900 mm. The gate fittings can be painted in any colour from the RAL palette. They are anodized as standard.

The specific location of the service door on the garage door depends on the system used and requires consultation with a sales representative.

- GARAGE DOOR**
- TORSION SPRINGS**
- ALUMINUM**